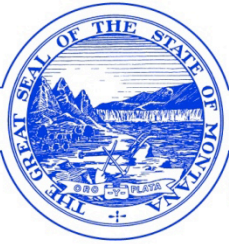


**DEPARTMENT OF NATURAL RESOURCES  
AND CONSERVATION**

**Northwestern Land Office - Kalispell Unit**

STEVE BULLOCK, GOVERNOR



**STATE OF MONTANA**

PHONE: (406) 751-2241  
FAX: (406) 751-2286

655 TIMBERWOLF PKWY, SUITE 2  
KALISPELL, MT 59901

**Scoping Notice  
Jewel Basin Salvage  
August 7, 2020**

The Montana Department of Natural Resources and Conservation (DNRC), Kalispell Unit is proposing to salvage blown down and wind damaged timber on the following state-owned parcels:

**Sections 2 & 11, Township 27N, Range 19W**

The Jewel Basin Salvage is located approximately 5 air miles northeast of Bigfork, Montana.

The primary objectives of the proposed project are:

- Generate revenue for the School for the Deaf and Blind and Montana State University Trusts by salvaging blown down and wind damaged trees.
- Reduce fuel loadings along property boundaries from blown down trees.

The proposed project would salvage approximately **500 thousand board feet from approximately 350 acres.**

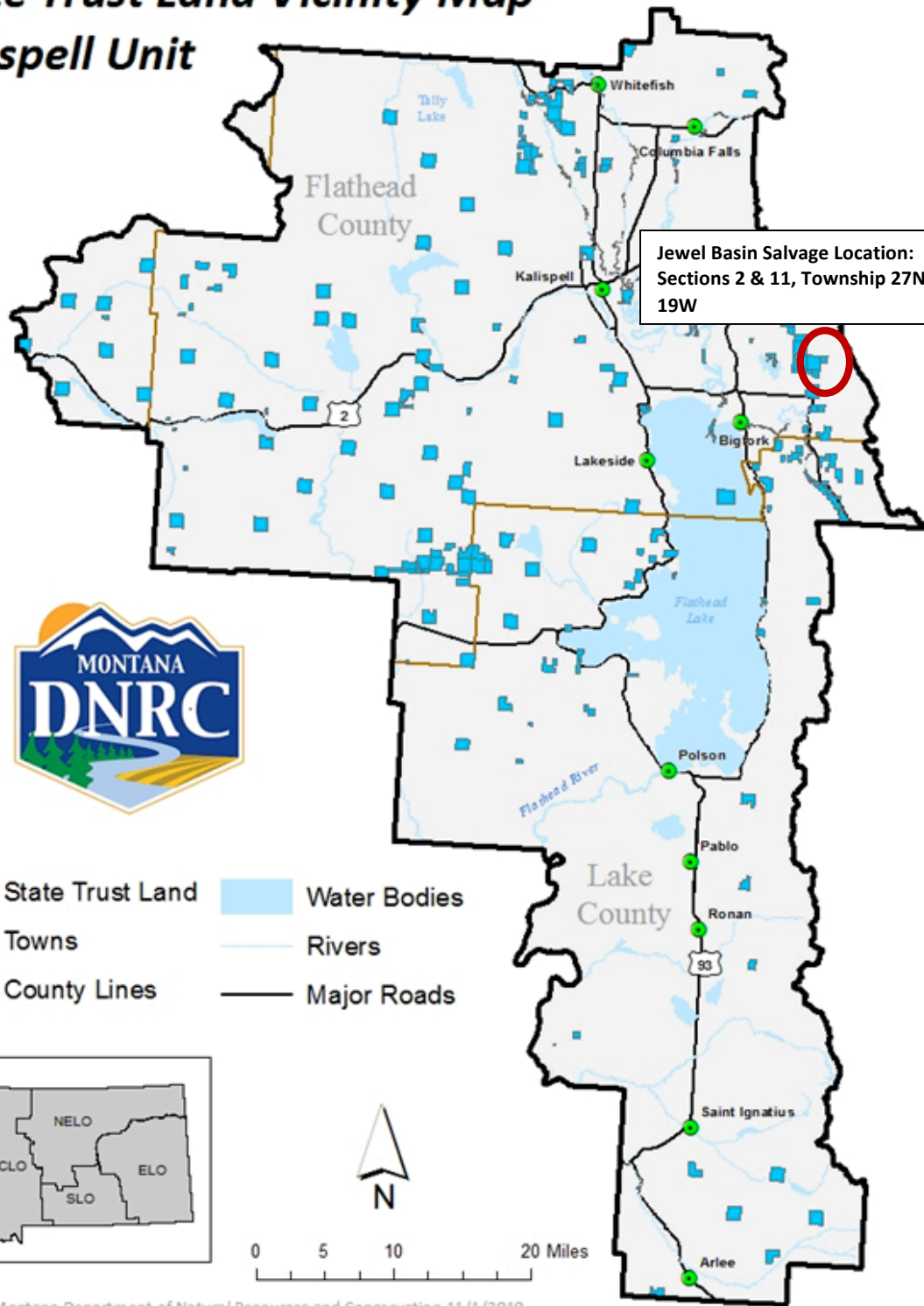
To minimize the loss and degradation of downed trees, the DNRC is in the process of analyzing this project and hopes to begin salvage operations as soon as possible. Specialists such as wildlife biologists, hydrologists, and soil scientists, will be consulted.

The Montana DNRC invites written comments and suggestions concerning this proposal. Please respond by **August 21, 2020** to:

Department of Natural Resources and Conservation  
Attn: Pete Seigmund  
Kalispell Unit  
655 Timberwolf Parkway, Kalispell MT 59901  
[pseigmund@mt.gov](mailto:pseigmund@mt.gov)  
(406) 751-2266

# State Trust Land Vicinity Map

## Kalispell Unit



Produced by Montana Department of Natural Resources and Conservation 11/1/2019  
Datum: NAD 1983 StatePlane